

Student Life & The University Experience



Education Liaison & Outreach

Activity 1

What do you do at university?



What we will cover today:

- Studying
- Accommodation and Living
- Social Life
- Work Opportunities
- Health & Safety

Studying

Myth Busting

1. First year doesn't count
2. It's all online
3. There's no homework
4. You can finish an essay in a day
5. It's all fun and games

Studying

What is the biggest change between School/College and University?

Independent Study

- Your own responsibility

Courses are generally taught through:

- Lectures, seminars and tutorials



What a lecture theatre looks like?



Lectures

- Take up a large portion of teaching
- Entirely dependent on the course you're taking
- Often with tens or hundreds of other students
- One lecturer presenting
- Must take notes
 - Take notes by pen/paper, laptops, tablets

Seminars and Tutorials

What is the difference between a lecture and a seminar?

- Smaller number of students
- Discussions and presentations
- Expected to prepare
- Reading set texts, doing some research
- Share your thoughts
- Opportunity to talk to tutors



How are you assessed?



- Assignments
 - Essays
 - Report
 - Presentation
 - Deadlines
 - Plagiarism
 - Plan ahead
 - Get support
- Exams

Don't panic

What kind of study support is available at college?

Facilities and aids available at university:

- Library resources / internet
- Learning Enhancement Team (LET)
- Tutors and Academic Support
- Student Learning Assistants (SLAs - specific to MDX)

Accommodation and Living

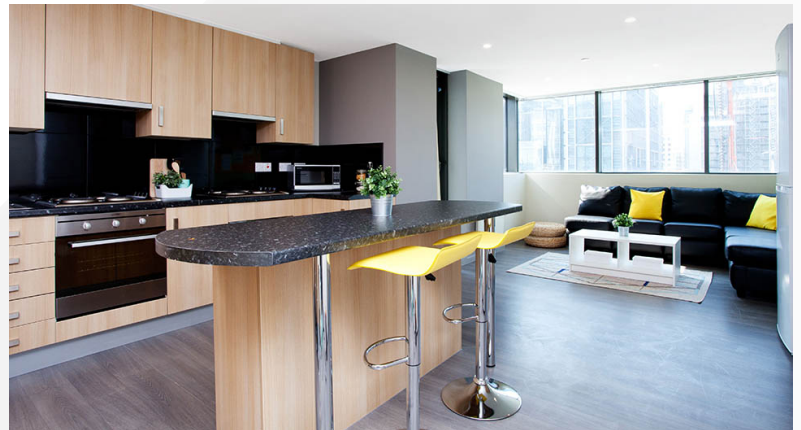
Moving away from your placement

Daunting – but exciting!

Everyone is in the same boat

You may love the new independence

Lots of student support



Accommodation – University Halls at MDX

- Cost: £145-175 per week
- Contracts: mostly 40 weeks
- LAC: All year round, i.e. 52 weeks
- To be paid in 2 or 3 instalments
- Extra 12 weeks to be paid at same rate
- Payment: online, over the phone by credit/debit card, cheque/banker's draft
- Payment to be made by due date
- Deposit: £250 (paid by MDX for you)



Accommodation – University Halls at MDX

- All halls self-catering
- Includes: bills, internet, furniture
- En-suite or standard rooms
- Own bedding, towels, crockery/cutlery
- Parking: free or small charge
- Close to the university
- May change room/halls if unhappy (with admin charge)
- Don't like halls?
 - Legally bound to stay until end of contract, unless withdrawing from your course





Accommodation options

Staying on placement

- Economic option: staying put arrangement
- Foster family support
- Consider travel times to university
- Different student experience

Flat share / private accommodation

- You can choose who you live with
- Read contract carefully: bills may, or may not, be included
- Full-time students do not pay council tax
- Need a TV licence
- Can be noisy
- Lack of privacy
- Can be expensive

Social life

Social life

Socialising

- Freshers Week: daily/weekly events
- Year round events
- End of year parties

Clubs and societies

- Magazine & Radio
- Sports
- International student societies
- Other interests e.g. painting



Student's Union

Students' Union

- A union of all students at a university – automatically a member when you enrol
- Led by students for students
- Independent to the university
- Make sure you are satisfied with your university experience
- Represent students views to the university
- Campaign for changes at university and beyond



Work Opportunities



Work Placements

Voluntary

- Looked on favourably by employers
- Helps the community and/or the employer
- Example: Fundraising for a charity

Placement

- Can be found through university placement office or independently
- Good experience for future career
- Example: Nursing student on placement in a hospital

Work Placements

Part-time

- Good transferable skills
- Can fund necessities during degree
- Example: Part-time Sales Assistant, Student Ambassador

Summer & Holiday

- More opportunity for full time work
- Opportunity to travel
- Example: Summer Camp helper

Flexible

- Variety of work i.e. hospitality, tutoring, retail
- Not necessarily for chosen career

Health & Safety

Security in Halls/Private Residence

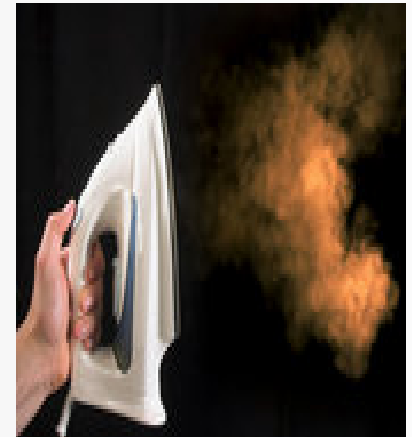
- Be careful about who follows you into the building
- Lock your room – even if you are just going into the corridor
- Make sure that valuables are covered by insurance
- Halls of residence provide a safe environment with 24hr security
- Students should never leave valuables in full view in windows



Safety in Halls/Private Residence

- Check your electrical appliances
- Don't overload plug sockets
- Keeps heaters away from flammable material
- Don't smoke in your room
- Be safe in the kitchen

*60% of fires start in the kitchen – do not prop the door open.
Do not use portable cooking appliances in rooms*



Safety on Campus - Looking after yourself

The University can provide:

- Emotional Support: counselling & mental health services
- Welfare advice: housing, benefits, finance etc.
- Educational Support: essay help, study advice
- Advice on your future: placements, careers advice etc.



Finally...

- Remember: everyone is in the same boat!
- Plenty of student support
- Be prepared for hard work
- If you are unhappy with your course, investigate changing
- There is no typical university experience – don't worry about peer pressure
- Make the most of your time at university!



Any questions?