



Middlesex
University

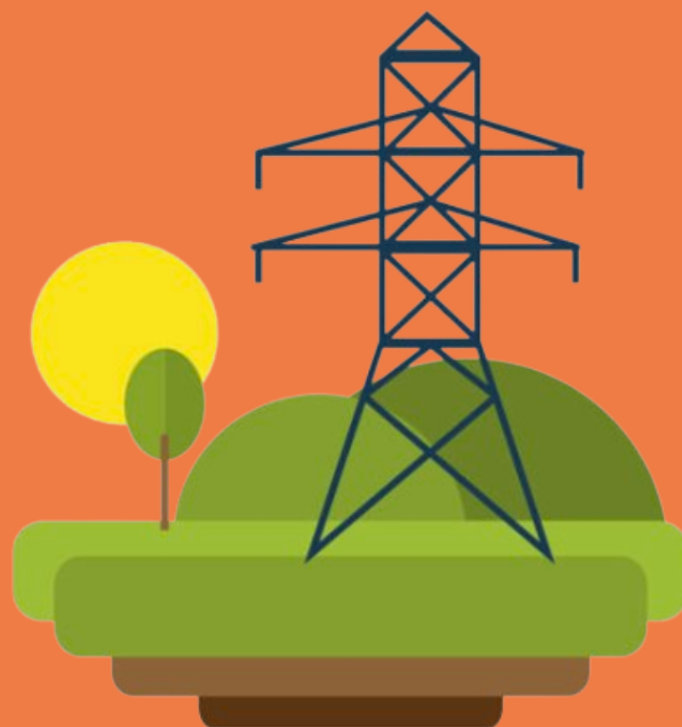
What Happens To Our Waste?



What Happens to Our General Waste?

General Waste is collected by Biffa and sent to Edmonton Station. all general waste is used to generate electricity, this means 0% directly send to land fill.

More information:
www.biffa.co.uk



What Happens to Our **Mixed Recycling?**

Mixed Recycle is collected By Biffa and sent to Edmonton for MRF processing and Recycling.

More information:
www.biffa.co.uk



What Happens To Our **Food Waste?**

Food Waste is Collected by Biffa and sent for Anaerobic Digestion – this generates biogas, electricity, and fertiliser.

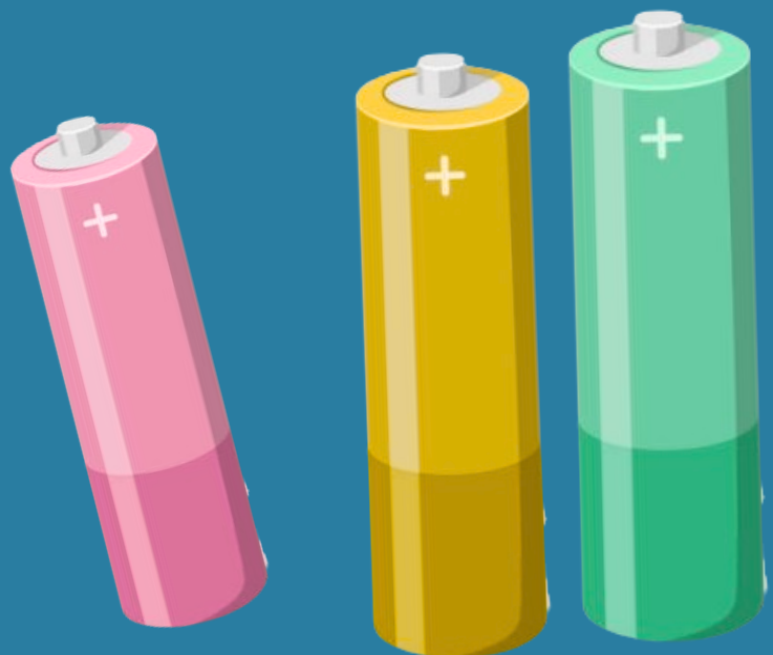
More information:
www.biffa.co.uk



What Happens To Our **Batteries?**

The Batteries are Collected by WasteCare and recycled – use the bins across campus.

More information:
<https://www.wastecare.co.uk/>



What Happens to Our **Confidential waste?**

Confidential waste is collected by Restore via a BS7858 vetted Secure Collection Operative and sent to Crayford Secure Destruction facility, shredded to the BSEN15713:2009 standard and then recycled – use the dedicated confidential waste bins across campus

More information:
<https://www.restore.co.uk/>

